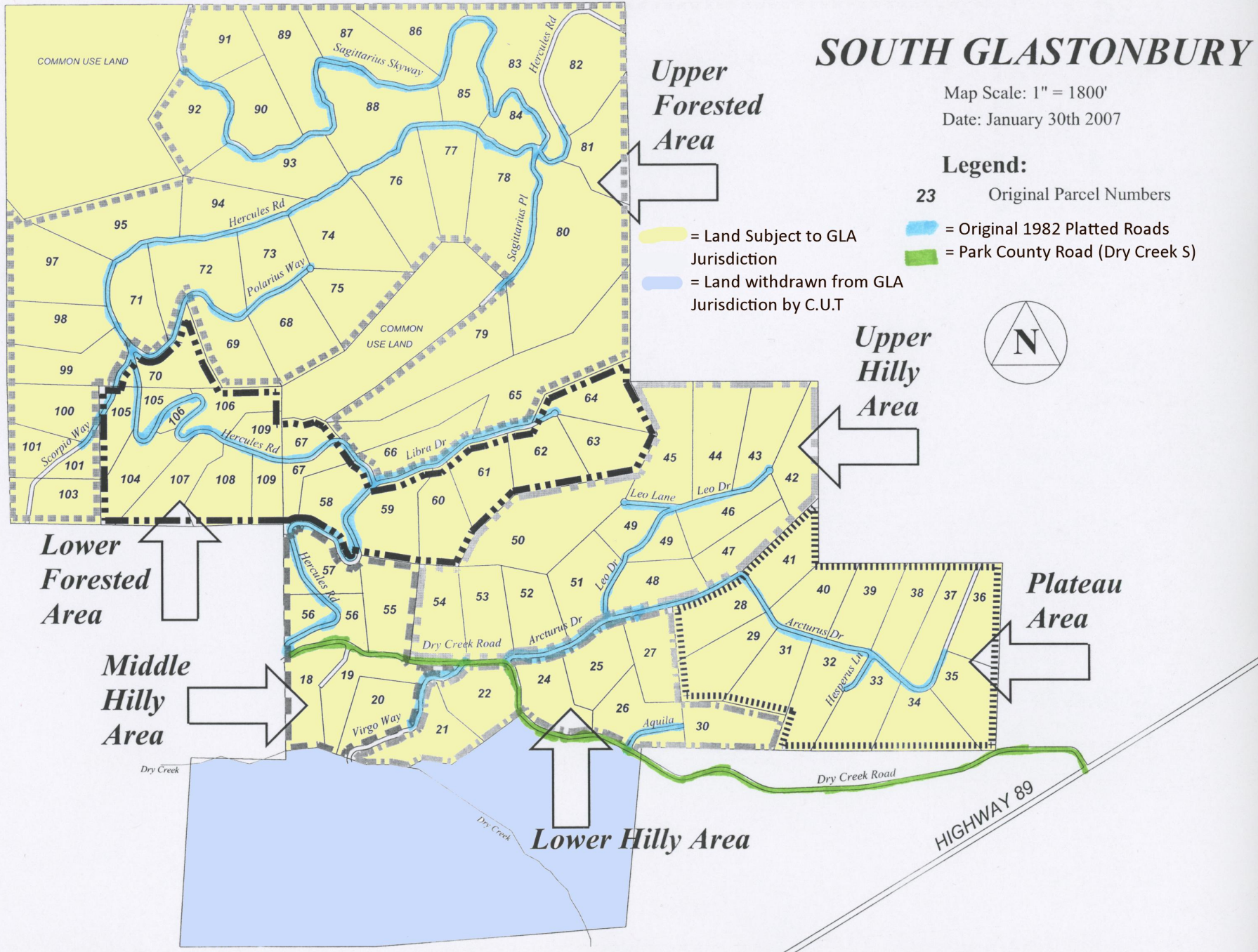


SOUTH GLASTONBURY

Map Scale: 1" = 1800'
Date: January 30th 2007

Legend:

- 23 Original Parcel Numbers
- [Yellow] = Land Subject to GLA Jurisdiction
- [Light Blue] = Original 1982 Platted Roads
- [Dark Blue] = Land withdrawn from GLA Jurisdiction by C.U.T
- [Green] = Park County Road (Dry Creek S)



South Glastonbury Political Map

South Glastonbury, known formerly as the Dry Creek Ranch, consists of 2,613 contiguous acres that were originally divided into 104 parcels as depicted in Certificate of Survey 616A. It was purchased in 1982 by Royal Teton Ltd. Royal Teton subdivided the ranch into twenty-acre or larger parcels, built gravel roads and installed underground power and wired telephone service.

South Glastonbury parcels and their subsequent development were regulated by:

- First assignment of covenants from Royal Teton Ltd. to Church Universal and Triumphant on December 30, 1986
- Second assignment of covenants from Church Universal and Triumphant, Inc. to Glastonbury Landowners Association on June 17, 1997
- Restated Declaration of Covenants for the Community of Glastonbury on September 26, 1997, which supersedes the previously listed documents.

The Restated Declaration of Covenants contains an appendix for South Glastonbury that is called Exhibit B. The exhibit contains the parcels, tracts and lots that are burdened by and benefit from the Restated Covenants. Approximately 394 acres, about 15% of the original ranch, were removed from the legal jurisdiction of the Covenants and the Community of South Glastonbury by Church Universal and Triumphant before September 26, 1997. That land is depicted in light blue on the South Glastonbury political map. Land that is currently, 2025, under the legal jurisdiction of the Glastonbury Landowners Association is depicted in light yellow.

Exhibit B from the Restated Declaration of Covenants.

TOWNSHIP 6 SOUTH, RANGE 7 EAST, M.P.M., PARK COUNTY, MONTANA:

PARCEL NOS.

18, 19, 20, 21, 22, 24, 25, 26, 27, 28, 29, 30, 31, 32, 33, 34, 35, 36, 37, 38, 39, 40, 41, 42, 43, 44, 45, 46, 47, 48, 49, 50, 51, 52, 53, 54, 55, 56, 57, 58, 59, 60, 61, 62, 63, 64, 65, 66, 67, 68, 69, 70, 71, 72, 73, 74, 75, 76, 77, 78, 79, 80, 81, 82, 83, 84, 85, 86, 87, 88, 89, 90, 91, 92, 93, 94, 95, 96, 97, 98, 99, 100, 101 and 102, as described in and shown on Certificate of Survey No. 616A, on file and of record in the Office of the Park County Clerk and Recorder; and 103, 104, 105, 106, 107, 108 and 109, as described in and shown on Certificate of Survey No. 981, on file and of record in the Office of the Park County Clerk and Recorder.

The real property described above shall also include any and all portions, parcels, lots, tracts or other divisions or alterations contained within or segregated from any of the property specifically identified above, whether created before or after the effective date hereof.

These Restated Covenants are recorded in the Office of Park County Clerk and Recorder in Roll 124 at Pages 548 – 574 and 652 – 653.